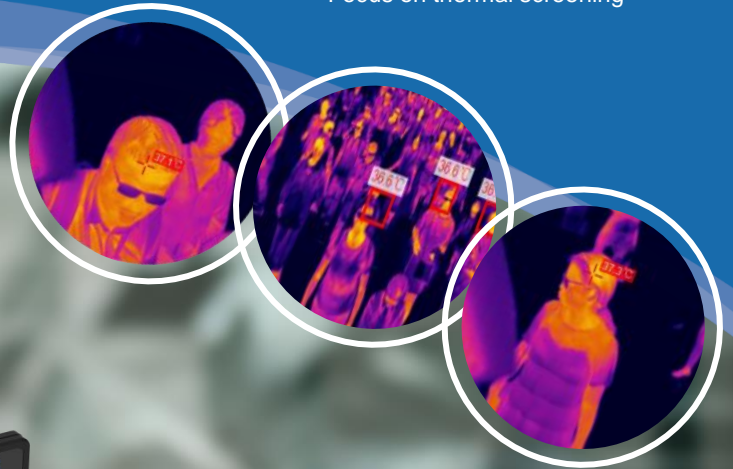




— 20 Years —
Focus on thermal screening



C400M

Fever Screening Thermal Camera

WHY CHOOSE GUIDE

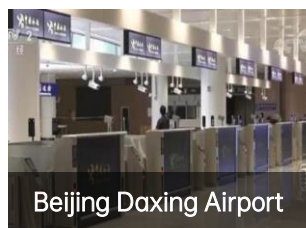
Guide Infrared—Leader in infrared thermal imaging industry

Guide Infrared Company has a market value of nearly 40 billion RMB, an industrial park covering 200 acres and 3,000 employees

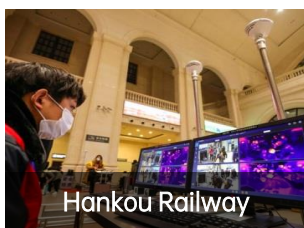
20 years' experience in the field of infrared thermography temperature screening

In 2003, GUIDE supplied the thermal imaging system to prevent the spread of SARS. In the past 20 years, based on a large number of practical application cases, we continuously optimize algorithms and upgrade software and hardware to achieve fast and accurate temperature detection. As a quick non-contact temperature detection equipment, GUIDE IR Fever Warning Systems are not only applied at transportation hubs such as airports, railway stations, subway stations, but also hospitals, banks, large factories, office buildings, schools, supermarkets, residents Community and other gathering public places.

APPLICATION CASES



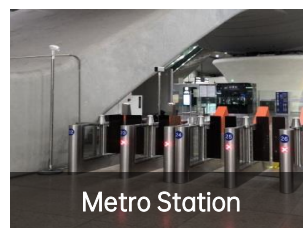
Beijing Daxing Airport



Hankou Railway



Wuhan Railway



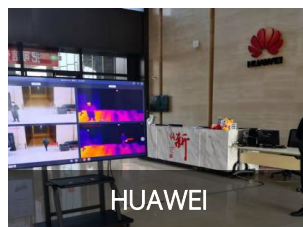
Metro Station



Hospital



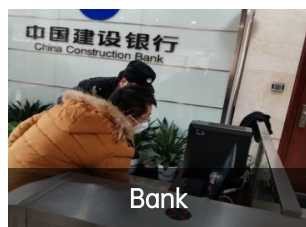
HONDA



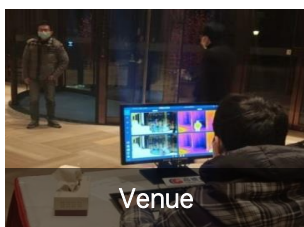
HUAWEI



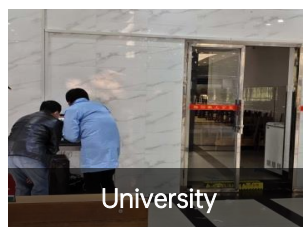
FOXCONN



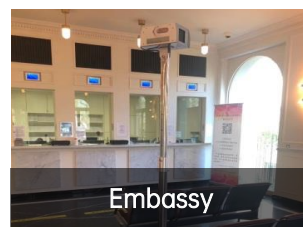
Bank



Venue



University



Embassy

C400M Fever Screening Thermal Camera

Won IF Design Award



CE FCC RoHS

Accuracy
 $\leq \pm 0.4^{\circ}\text{C}$



GUIDE C400M IR Fever Screening Thermal Camera can help to detect virus related fevers fast, smartly, and safely, which are widely used at airports, railway stations, metro stations, factories, schools and other gathering public places. GUIDE C400M integrates various technologies such as infrared thermography, HD visual camera, high-end image processing, intelligent warning, screen display, and wireless remote control to ensure the human temperature screening more simple, efficient and accurate.

Features

- Provide fast temperature screening for a group of people in real-time
- Support automatic image & sound warning and snapshot when detecting elevated temperatures
- Support automatic temperature calibration and warning pre-value setting
- Rotatable design to achieve all around monitoring
- Optional tripod, 24 - inch monitor, support projection function, wireless control
- Handheld-type, easy to deploy and take

Application

- Provide large-scale temperature screening at airports, railway stations, office buildings, offices, schools and more to control and reduce the spread of virus with fever symptom, such as Covid-19, Ebola, SARS and Zika..



C400M		
Category	Item	Specification
IR Imaging Performance	IR resolution	384×288
	Detector type	VOx/25μm/7.5~14μm
	Frame rate	25Hz/9Hz
	NETD	40mk
	Focal length	25mm/F1.0
	Field of view(FOV)	21.7°×16.4°
	Spatial Resolution(IFOV)	0.99mrad
	Min focus distance	0.4m
	Focus	Motor-drive/Auto
Image Presentation	LCD Display	5",1280×720 High Light Touch Screen
	Viewfinder	1280×960 LCOS Screen
	Image Mode	IR image/Visual image/PIP/MIF
	Digital Zoom	1.1~4x
Measurement	Measurement Range	20°C~60°C
	Accuracy	≤±0.4°C (target temperature 32°C~38°C)
	Temperature Measurement	Display the highest temperatures of 5 areas at the same time
	Analysis Info Storage	Saved with image(Areas)
	Auto Tracking	Either max
	Temperature Alarm	Support image & sound & light warning
Storage	Image Format	Full Radiometric (JPG)
	Image Internal Storage	Built-in 16G, SD card 16G (maximum support 32G)
	Report Creation	PDF format,Wi-Fi print
	Video Format	H.264(with temperature information)
	Video Internal Storage	Manual
Other	Hardware	5MP Visual camera, Illuminator, laser, Wi-Fi, Microphone(Volume adjustable), Speaker(Volume adjustable), Digital compass, GPS, Light sensor
	Interface	Micro USB 2.0, SD card, Gigabit Ethernet, Tripod, Mini HDMI
	Battery	Rechargeable Li-ion Battery, Operating more than 4 hours, Sleeping mode
	Working Temperature	15°C~35°C
	Storage Temperature	-40°C~70°C
	Encapsulation	IP54
	Weight	1350g
	Size	206mm×145mm×135mm
	Standard Accessories	Li-ion battery,Power supply adapter, Adapter plug (5 pcs), Shoulder strap,USB cable, HDMI cable, Network cable, Quick Start Guide, User Manual, Data Download Card, SD card(16G), Hard transport case
	Optional Accessories	Tripod, wireless mouse & keyboard & Micro USB OTG cable, 24 inch monitor (HDMI interface) & changeover plug., Li-ion battery, Pouch

*Note: The temperature measurement accuracy is a typical value under the specified mode and application conditions. The final interpretation right belongs to our company.

Standard

Thermal camera



Optional

Thermal camera

Tripod

Monitor

Mouse & keyboard



Applications

Stations, factories, offices, supermarkets, schools where with an orderly flow of people, and suggest set up a one-way channel.

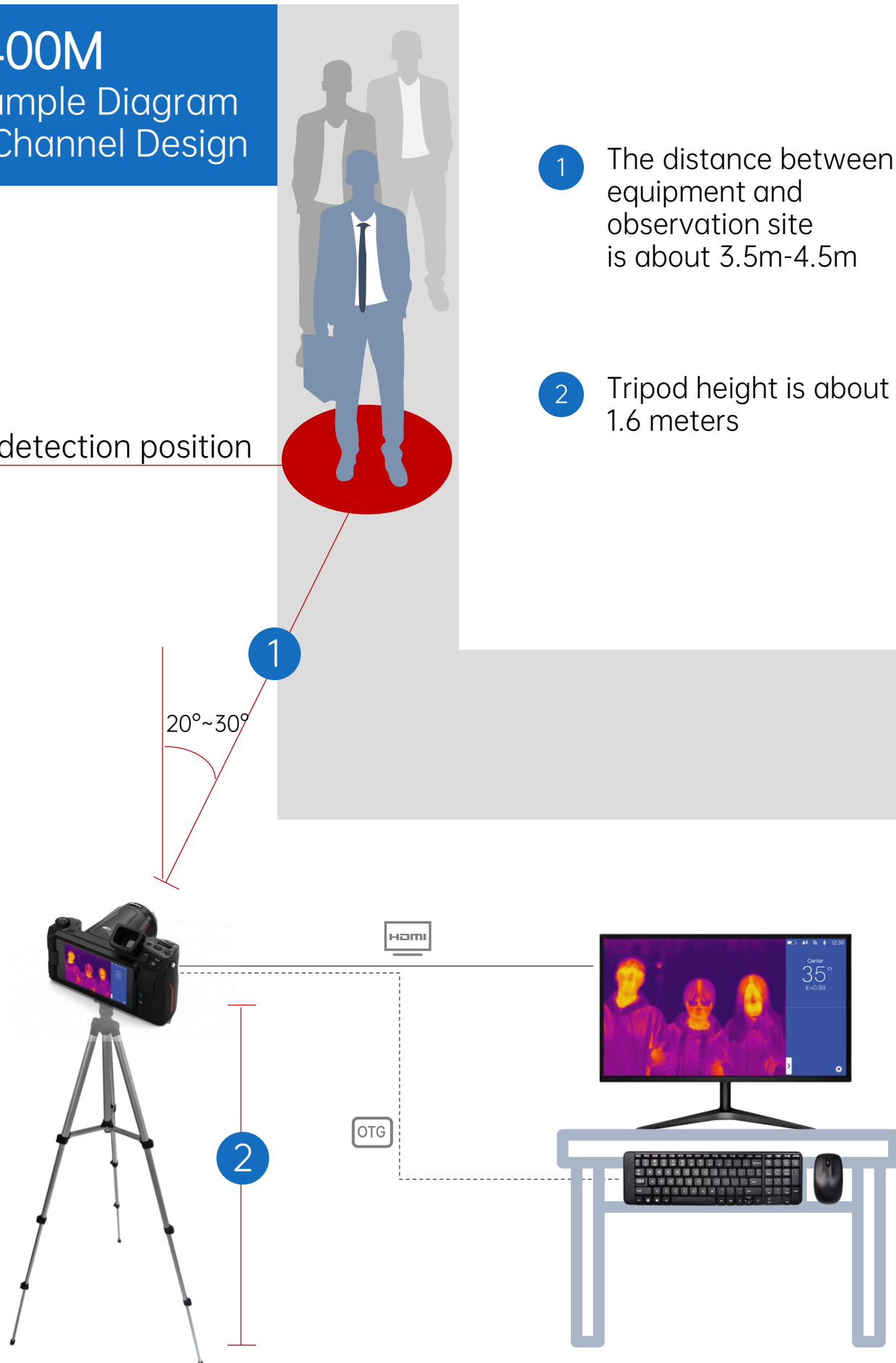
Suggested distance: 3~5 meters



C400M

Example Diagram of Channel Design

Best detection position



ABOUT GUIDE

GUIDE SENSMART is the subsidiary of **GUIDE INFRARED**, focusing on R&D, manufacturing and marketing for commercial infrared thermal imaging products for masses market since 2016. **GUIDE INFRARED** was founded in 1999, and takes the lead in R&D, production and sales of infrared thermal imaging system and large-scale optoelectronic system. At present, **GUIDE** Group has a market value of nearly 40 billion RMB, and has more than 3,000 high-tech talents.

In the past 20 years, **GUIDE**, who has worked hard in the field of thermography human body temperature detection, has accumulated a large number of real and reliable samples and numerous application scenarios, forming a large scientific database. Through continuous optimization of algorithms and software and hardware upgrades, especially in the deep learning algorithm based on neural network, which makes body temperature measurement faster and more accurate.



Guide Sensmart Tech Co., Ltd

Email: enquiry@guide-infrared.com

Tel: +86 27 81298784

Website: www.guideir.com

*Technical parameters are subject to change without notice. For the latest information, please visit our website.

